



Welcome to Confiserie Bachmann's „Detective-Trail 2“

Solve exciting riddles, discover the picturesque city of Lucerne and win a sweet prize at the end. Get to know Lucerne from its best and most beautiful side. Are you ready?

- Times** The trail can be started anytime.
- Costs** This trail was created by the Confiserie Bachmann and is free of charge. If you get all the answers right, you will receive a prize at the end of the trail.
- Prize** Your prize awaits you at the finish line in our shop at Schwanenplatz 7. Our opening hours are:
MON-WED 07:00-19:00, THU 07:00-21:00, FRI-SAT 07:00-19:00, SUN 09:30-19:00
More information about our shop at Schwanenplatz: www.confiserie.ch/schwanenplatz
Changes in opening hours may occur on public holidays.
- Distance** 4km by foot
- Duration** 2-3 h
- Start** Lucerne railway station
- How it works** Go to the Detective-Trail's start point. From here, follow the route as described. Many exciting riddles await you along the way and you will get to know different attractions and monuments of Lucerne.
- For each question there are three answers to choose from, but only one is correct. Behind each answer you find a green number. Choose your answer and keep adding the green numbers you get for your chosen answers. If at the end of the trail, the resulting sum from your answers is correct, you receive a gift.
- Are you ready for exciting riddles and a versatile tour through the beautiful city of Lucerne? Then grab your things and off you go to the starting point. The adventure starts now!
- Help** Below you find the link to check the route on Google Maps:
www.confiserie.ch/detektivtrail2-lucerne-map
The solutions can be found on the homepage of the Detective Trail:
www.confiserie.ch/detektivtrail
- Languages** German
English
Portuguese
French



Directions



Information

You are at the Confiserie Bachmann store at Lucerne railway station near platform 3.



Question 1

How many macarons are there in the picture in the Confiserie Bachmann store?

- A) 7 points = 2
- B) 8 points = 4
- C) 9 points = 6

Lucerne railway station



After a serious fire on February 5, 1971, architect Santiago Calatrava created the Lucerne train station as we know it today. With 167,000 passengers a day, Lucerne station is the fourth busiest station in Switzerland. However, the image of the station will change considerably in the future. A through station is to be built with an estimated construction period of 11 to 13 years. The final realization should be decided in 2026.

Head to the basement of the station and look for the Confiserie Bachmann store.



Question 2

Which sentence is written on the packaging of our Lucerne Water Tower Stones?

- A) The unique specialty points = 3
- B) The culinary landmark of Lucerne points = 6
- C) Exclusivity at Bachmann points = 9

Confiserie Bachmann and Lucerne Water Tower Stone



For over 125 years and already in its 4th generation, our family business, Confiserie Bachmann, has been a guarantee for bread, fine baked goods and specialties of the highest quality. In our bakery in the heart of Lucerne, over 500 different products are made fresh every day. One product that reflects a true specialty is our Lucerne water tower stone. A piece of irresistible praline art with a fine cherry brandy filling, delicate génoise biscuit and gianduja covered in Swiss chocolate.



Directions

Now walk towards Bahnhofplatz and up the escalator to the old station archway.



Question 3

Now look for the board with the overview of the floor plates. Which name is on no. 14?

- A) Hugo Schär points 5
- B) Monika Gasser points 10
- C) Bernhard Egli points 15

Go towards the KKL Luzern under the large roof and look for the box shown below with the 5 sockets.



Question 4

What colors do the sockets have?

- A) 3 red, 2 blue points = 6
- B) 3 blue, 2 red points = 12
- C) 4 red, 1 blue points = 18



Information

History of Lucerne's railway station



The first Lucerne railroad station (1856) was a wooden structure and was built as the terminus of the main line of the Swiss Central Railway Company. Thanks to its central location, Lucerne station quickly became a transportation hub for the whole of Switzerland. Lucerne station was completely rebuilt in 1896. On February 5, 1971, the unthinkable happened and Lucerne station was almost completely burnt down. The architect Santiago Calatrava designed the current station and construction was completed in 1990.

Culture and Convention Center Lucerne KKL



Opened in 1998, the KKL is one of Lucerne's landmarks along with the Chapel Bridge and Lion Monument. The French architect Jean Nouville actually designed the KKL on Lake Lucerne. However, this could not be realized for a number of reasons. He decided to bring the water to himself with two water channels that flow directly into the building. The striking roof, which consists of 2,000 aluminum panels, has a total surface area of over 12,000 m² and weighs over 2,400 tons.



Directions



Information

Walk towards bridge 6 and past the „Seebar“ on the right. You are now in front of the University of Lucerne.



Question 5

What does this display board in front of the university say?

- A) Bahnhofplatz points = 2
- B) Kongresszentrum points = 4
- C) Vorfahrt KKL points = 6

University of Lucerne



With around 3,500 students and 82 professors, the University of Lucerne is one of the smaller universities in Switzerland. However, its roots go back a long way, as there have been courses in philosophy and theology in Lucerne since 1600. The University of Lucerne focuses on humanistic sciences such as theology, cultural and social sciences, law, economics, health sciences, behavioral sciences, medicine and psychology.

Look for this statue near the shore.



Question 6

Which city is mentioned on the statue's base?

- A) Munich points = 3
- B) Paris points = 6
- C) Vienna points = 9

Inseli park



With a wonderful view of the Lucerne skyline and its central location, the Inseli is an important and prominent open space in the city of Lucerne. In spring and summer, it is a green oasis where people like to meet. The Lucerne "Määs" takes place here for two weeks in the fall and "Rudolf's Christmas" takes place here at Christmas time.



Directions



Information

Now leave the Inseli and walk to the bridge in the direction of Ufshötti. Once you are on the bridge, look to your right and look for this SGV building.



Question 7

What does the SGV sign say?

- A) Eingang points = 3
- B) Grüezi points = 6
- C) Kantine points = 9

Mount Pilatus



Our local mountain, Mount Pilatus, is not only an imposing mountain, but also has many stories to tell. According to legend, in the summer of 1421 a mighty dragon flew to Mount Pilatus and left behind a dragon stone, the healing properties of which were confirmed. In the summer of 1868, Queen Victoria spent the night at the Hotel Bellevue, where the British sovereign rode up the Pilatus on a mule. Later in 1890, the Hotel Pilatus Kulm was built and the festive dining room was named after her, the Queen Victoria Hall.

Continue along the bridge. Leave the bridge and look out for this red paddle wheel on the left.



Frage 8

When was the paddle wheel built?

- A) 1880 points = 2
- B) 1892 points = 4
- C) 1894 points = 6

SGV boat tours



A round trip on Lake Lucerne is always a good idea! Between 2.5 and 3 million passengers are transported on Lake Lucerne every year. In addition, there are always various events such as culinary cruises. From top modern yachts to nostalgic steamboats, the SGV offers something for everyone with its 5 paddle steamers and 14 motorboats.



Directions



Information

Continue straight ahead on the path. You can see the Ufschötti from a distance.



Question 9

How many benches were there along the way?

- A) 4 points = 5
- B) 6 points = 10
- C) 8 points = 15

Ufschötti



Did you know that the Ufschötti got its name because it is actually an embankment? When the Sonnenberg tunnel was built, the excavated material was used to create the Ufschötti. A meeting place that is particularly lively in summer for swimming, barbecuing and enjoying time together.

You should now see a white pebble square. Now look for this sign nearby.



Question 10

What number can you find on the brown board?

- A) 8.70 points = 3
- B) 7.20 points = 6
- C) 4.25 points = 9

Tribtschen district



The Tribtschen district is an idyllic setting surrounded by picturesque countryside, elegant mansions and the lake. The famous composer Richard Wagner found refuge in the Villa Tribtschen from 1866 to 1872 and composed his most famous compositions here. With its scenic beauty, rich cultural heritage and connection to one of the world's greatest composers, Tribtschen embodies Lucerne's timeless appeal and captivates visitors with its blend of history, art and natural splendor.



Directions



Information

Now leave Ufschötti and turn into Werkhofstrasse. When you are near Schurter, look out for this hydrant.

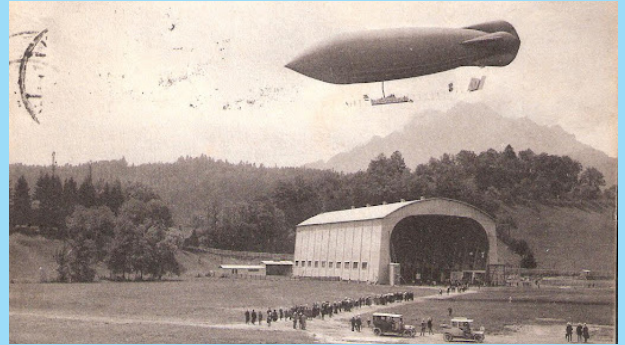


Question 11

What number is on the hydrant?

- A) 2248 points = 2
- B) 3359 points = 4
- C) 4356 points = 6

Tribtschen district and the old Zeppelin airport



Did you know that there used to be a zeppelin hangar in Tribtschenmoos? The airship hangar was built in 1909 and the first Zeppelin round trip with the "Ville de Lucerne" took place on July 24, 1910. Zeppelin flights were successful and accident-free until 1912. However, with the beginning of the First World War, Lucerne's airship travel also came to an end due to the threat of war and financial difficulties. The hangar was demolished in 1923. Today there are sports facilities and an ice rink (Lucerne Ice Center) on the site.

Look carefully and continue along the street until you see a Macaron tower. You are now at the headquarters of Confiserie Bachmann.



Frage 12

How many lamps are hanging in this group?

- A) 10 points = 3
- B) 15 points = 6
- C) 20 points = 9

Welcome to the headquarters of Confiserie Bachmann



4 generations, over 125 years of experience, one family. The success story of Confiserie Bachmann began with Anton Bachmann in 1897. With the neighborhood bakery in Wessmlin, Anton created a family business that quickly became a byword for confectionery in Lucerne. Raymond Bachmann opened further specialist stores and in 1997 the current CEOs Raphael and Matthias Bachmann joined their parents' business.

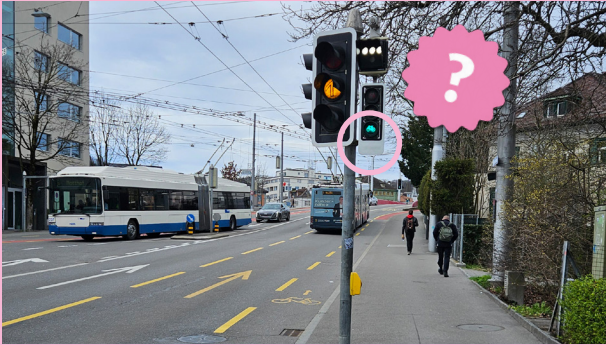


Directions



Information

Once you have left our specialist store, head towards the Avia petrol station. You are now on Tribschenstrasse. Walk in the direction of Langensandbrücke.



Question 13

What does this sign say just before the Langensand Bridge?

- A) Taxi points = 5
- B) Velo points = 10
- C) Bus points = 15

Langensand Bridge



The Langensand Bridge in Lucerne crosses the tracks of the main railway station and connects the city center with the Tribschen district in a dense traffic junction. It replaces an ageing concrete bridge from 1938, which was no longer able to cope with the growing demands of road and rail traffic.

Keep walking on the bridge.

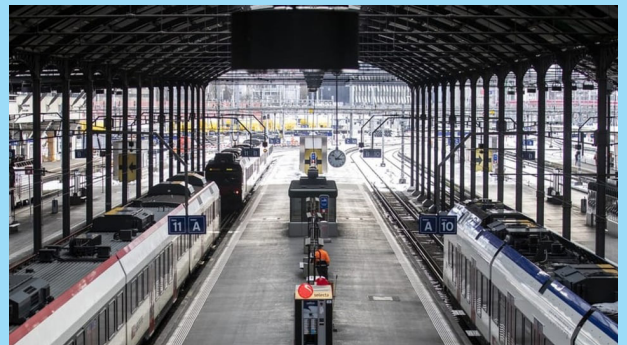


Question 14

What is the number of the points circuit? Look for the number on the tracks.

- A) X511 points = 2
- B) X522 points = 4
- C) X533 points = 6

Tracks of railway station Lucerne



With its 14 tracks, Lucerne station is the 6th busiest railway station in Switzerland. The platform hall consists of 16 tracks, of which tracks 1 to 11 are standard gauge. The meter-gauge tracks 12 to 16 are used by the Central Railway. Most trains depart from platform tracks 12 to 14, track 15 is rarely used and track 16 has no platform.



Directions



Information

Cross the road at Bundesplatz and walk to the Hotel Cascada.



Question 15

What number is on this sign?

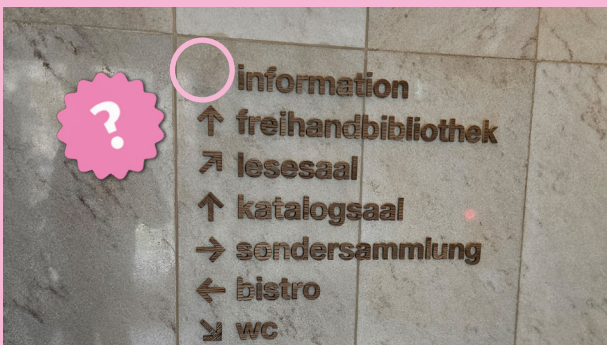
- A) 22 points = 3
- B) 24 points = 6
- C) 26 points = 9

Bundesplatz



The Bundesplatz was created at the turn of the century and, together with Moosstrasse, was conceived as the hub of the city of Lucerne. To this day, it has not lost its importance as a transportation hub.

Walk down Sempacherstrasse until you reach Vögeligärtli. On the left in the park you will see the city library.



Question 16

Go into the library and at the 1st panel on the right, where does the "Information" arrow point?

- A) To the right points = 4
- B) Straight out, up points = 8
- C) To the left points = 12

ZHB Central and University Library



Today's Central and University Library, or ZHB for short, was created in 1951 with the merger of the Citizens' Library and the Cantonal Library. It is the largest library in Central Switzerland and holds over 1.4 million books and audiovisual media. In its dual function, the ZHB collects, indexes and provides information and media both for the general public and for teaching and research, particularly at the University of Lucerne, the Lucerne University of Teacher Education and the Departments of Business and Information Technology at the Lucerne University of Applied Sciences and Arts.



Directions



Information

Now look for the stone pictured below in the Vögeligärtli.



Question 17

Which month is mentioned on the stone?

- A) may points = 2
- B) june points = 4
- C) july points = 6

Vögeligärtli



From the gray to the green lung, because the city of Lucerne's first gasworks stood here from 1858 to 1899. The gasworks was relocated in 1899 and the Sempachergarten, as it was then known, provided space for recreation and enjoyment. In the same year, a stalactite grotto was set up and in 1901 deer found a home here in the deer park. Finally, from 1908 to 1954 there was a large aviary, which gave the Sempachergarten, also known as the English Garden, its popular name: the Vögeligärtli.

Now turn right into Hirschmattstrasse. Walk a short distance until you find this logo at the crossroads near Viktoriaplatz.



Question 18

What color is the entrance carpet of La vie en Rose?

- A) red points = 3
- B) brown points = 6
- C) grey points = 9

La vie en Rose



Do you need a short break? No problem, you are in front of our Lifestyle Cafe La vie en rose. Let yourself be enchanted by our charming ambience and our culinary delights, we look forward to seeing you!



Directions



Information

Cross the road towards Kantonalbank. You are now in front of Confiserie Bachmann.



Question 19

What shape is the drinks cooler in the corner?

- A) round points = 4
- B) square points = 8
- C) rectangular points = 12

Confiserie Bachmann Kantonalbank and Schutzensgeli



Have you ever tried our Schutzensgeli? The fine, melt-in-the-mouth crispy truffles have been putting a smile on people's faces for 13 years. The four different flavors - caramel, strawberry, milk and dark - create culinary moments of pleasure.

Look for the yellow letterbox and walk through the Buobenmatt passage until you reach the City theater.



Question 20

When was the first major renovation of the Lucerne City Theater?

- A) 1897 points = 2
- B) 1898 points = 4
- C) 1899 points = 6

City theater



The Lucerne Theater was opened in 1839 and completely rebuilt after a devastating fire in 1924. It has 481 seats spread over the stalls and two galleries. Today, the Lucerne Theater is the oldest theater in Switzerland, where plays, operas, ballets and concerts are still performed.



Directions



Information

On the other side of the street to your left, you will find the Rathaussteg.



Question 21

When was the Rathaussteg built?

- A) 1850 points = 3
- B) 1899 points = 6
- C) 1912 points = 9

Now cross the Rathaussteg. You can also take a great photo of the Chapel Bridge on the footbridge.



Question 22

How many lamps does the bridge have?

- A) 8 points = 2
- B) 10 points = 4
- C) 12 points = 6

Das Luzerner Wahrzeichen – Der Wasserturm



Im 13. Jahrhundert entsteht der Luzerner Wasserturm – fast hundert Jahre vor der benachbarten Kapellbrücke. Der Luzerner Wasserturm besticht als trutziges und doch attraktives Bauwerk. Der achteckige, gut 34 m hohe Turm wurde um 1300 als Teil der Stadtmauer errichtet und diente wechselweise als Stadtarchiv, Schatzkammer, Kerker und Folterkammer. Heute beherbergt das mittlere Stockwerk das Vereinslokal des Luzerner Artillerievereins.

Rathaussteg



With its total length of 90m, the Rathaussteg connects the Lucerne Theater on Bahnhofstrasse with the town hall in the old town. The current crossing replaced an iron truss bridge dating from 1899. The Rathaussteg is crossed by an average of over 13,000 people per day.

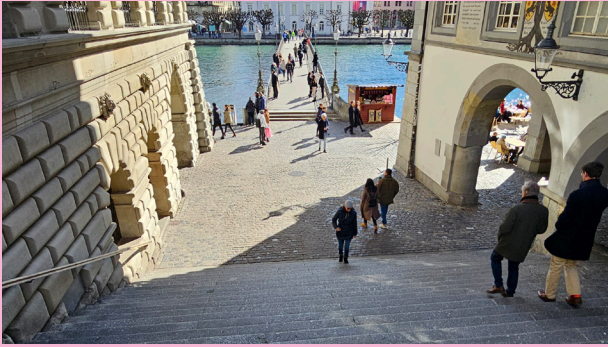


Directions



Information

Once you have crossed the Rathaussteg, walk up the stairs to Rathausplatz.



Question 23

How many steps does the staircase have?

- A) 24 points = 5
- B) 28 points = 10
- C) 30 points = 15

Guild house zur Pfistern



The Lucerne Pfistern guild was founded in 1408. The guild consisted of craftsmen, the Pfistern (bakers) and the millers. The guild house was not only a meeting place for the "high lords", but was also where the flour and bread prices were set and the membership of new guild members was discussed. After several changes of ownership, the guild house was sold to the Lucerne Association of Master Bakers and Confectioners in 1977 and the newly founded Zunfthaus zu Pfistern cooperative returned the house to its original purpose and value.

Look for this sign at the Rathaus/Kornmarkt in the direction of Furrengasse.



Question 24

Which number is shown at the bottom right?

- A) 30 points = 2
- B) 40 points = 4
- C) 50 points = 6

Lucerne town hall



The town hall was built between 1602 and 1606 in the Italian Renaissance style. It is on the list of cultural assets of national importance in the canton of Lucerne. The first council meeting was held in the town hall on June 24, 1606. The Grand and Small Councils met here until 1798. Today, the Grand City Council holds its meetings here. The portrait hall, where civil weddings are also held, is worthy of note.



Directions



Information

Now walk through Furrengasse, at Badergässli turn right down to the Reuss. Walk along the Reuss towards Chapel Bridge.



Question 25

Which name is on picture 55?

- A) Martin points = 3
- B) Johan points = 6
- C) Petrus points = 9

Chapel Bridge



The Chapel Bridge is quite simply Lucerne's landmark. This historic wooden bridge, which spans the Reuss, is the second oldest wooden bridge in Europe and dates back to the 14th century. Originally the bridge was longer, but when the banks were filled in around 1835, a 75-metre section was demolished. On the night of August 18, 1993, a large fire broke out and destroyed a large part of the bridge. The bridge was immediately rebuilt, inaugurated on April 14, 1994 and reopened to pedestrians.

You are now standing directly in front of the Zurgilgenhaus. Walk around this building.



Question 26

What color is the flag at the top?

- A) red-white points = 5
- B) green-white points = 10
- C) blue-white points = 15

Zurgilgenhaus



Built between 1507 and 1510, the Zurgilgenhaus on Schwanenplatz is one of the oldest stone houses in the city of Lucerne. With its striking tower, it is hard to imagine the cityscape without it and is likely to adorn countless tourist photos. It is still owned by the patrician zur Gilgen family.



Directions



Information

You are now on the Kapellplatz. Look for the stucco work shown below.



Question 27

Which animal is on the emblem?

- A) lion points = 2
- B) elephant points = 4
- C) swan points = 6

Kapellplatz



According to legend, "Brother Fritschi", a carnival figure, is buried on Kapellplatz square with the colorful Fritschi fountain. The pillar of the fountain depicts the Fritschi family. It is surmounted by carnival masks from the turn of the century and crowned by a flag bearer. On Kapellplatz, the annual carnival begins on Dirty Thursday and heralds the start of a week-long party that ends in the early hours of Ash Wednesday.

Look for Kapellplatz 10. If you are coming from Schwanenplatz, it is the first alley on the right. Walk through this alley until you come to this square.

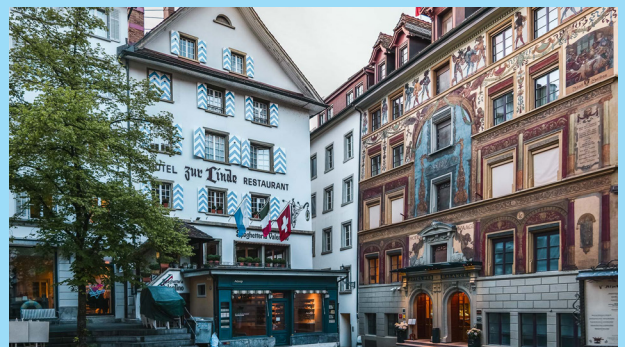


Question 28

What is the name of the square by this fountain?

- A) Stiefelplatz points = 3
- B) Schuhplatz points = 6
- C) Lederplatz points = 9

Lucerne's old town



In the car-free old town, historic houses adorned with frescoes line the picturesque squares. Anyone who opens their eyes here will be delighted by the countless architectural, artistic and cultural-historical details. The city of Lucerne was founded in 1178 and to date (2024), Lucerne's Old Town is 846 years old. Lucerne was also the capital of the new Helvetic Republic in 1798. However, this only lasted nine months, after which the government had to flee to Bern.



Directions



Information

From the fountain, turn right through Grendelpassage and then right into Grendelstrasse towards Schwanenplatz until you reach Confiserie Bachmann.



Congratulations!

You did it and you have reached the finish line of this journey. Inside the Bachmann shop at Schwanenplatz a sweet little gift awaits you.

Confiserie Bachmann Schwanenplatz



Between watches, jewelry and banknotes, Schwanenplatz smells of melt-in-the-mouth chocolate and freshly baked bread and pastries. The 400 m2 location is the main store of Confiseur Bachmann AG. A mecca for those with a sweet tooth with a flowing chocolate wall and cafeteria/restaurant.

Get your gift!

Are you sure you got the right answers to all the questions?

That's how you proceed:

1. Add together all the green numbers that you received for the answers you chose. What is the sum of all your green numbers?
2. Go to the Bachmann shop at Schwanenplatz and tell your sum to a Bachmann employee.
Sum = _____
3. Show the following code at the register and receive your gift:



Item number: 57565

Thank you very much for completing the **Detective-Trail 2!** We hope that you had fun doing so and we are looking forward to seeing you again in one of our shops.

Your Confiserie Bachmann